



Model 500 RD 500 kW Diesel Generator Set

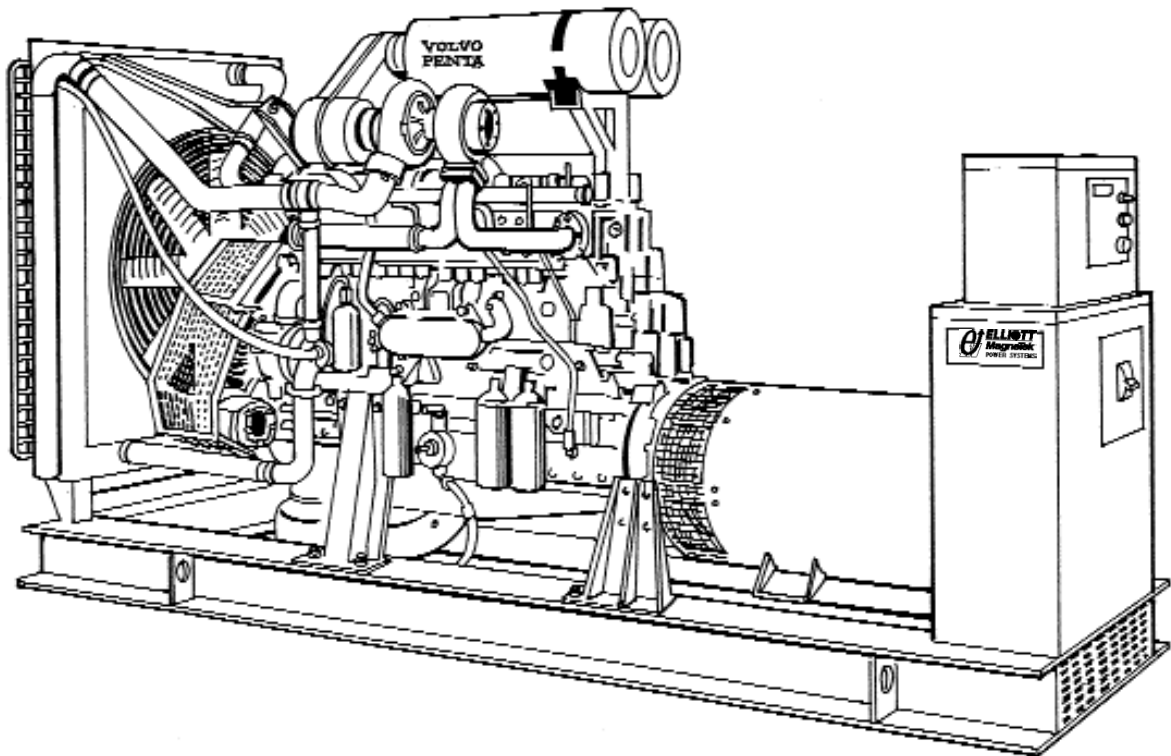
Generator Set Rating

Three Phase	60 Hz	50 Hz
	kW/KVA	kW/KVA
Continuous		
Standby 150°C	500/625	400/500
Prime Power 105°C	425/531	340/425
Single Phase	60 Hz	50 Hz
	kW/KVA	kW/KVA
Continuous		
Standby 150°C	312/312	335/335
Prime Power 105°C	265/265	285/285

Quality Power Producing Equipment

is our business at Elliott MagneTek Power Systems, Inc.. Our power systems offer solutions to requirements for reliable, quality electrical power.

- 100% full load tested.
- Performance supported by prototype testing.
- 12 lead re-connectable AC synchronous generators.
- Solid state automatic voltage regulator.
- 50 or 60 Hz operational.
- Standard Digital Control Panel meeting standards set by NFPA-110.



Product Features

System Reliability and Longevity

begin with design experience and integrity. EMPS was formed by two companies with over one hundred years experience producing state-of-the-art power generation equipment. This experience is designed into our generator sets.

Single Source Responsibility:

Product service, support and parts available through EMPS network of distributors.

Accessories and Flexibility

are designed into EMPS' generator sets at the factory level to meet specific application needs.

Organizational Commitment

to innovative, leading edge technology and environmentally friendly electrical products and services.

Generator Set Design Features

Model 500 RD 500 kW Diesel Generator Set

Standard Equipment

- * 4 Cycle engine.
- * AC synchronous 12 lead re-connectable brushless alternator.
- * Steel base with vibration isolators between engine, generator and base.
- * Generator mounted terminal and meter /control box.
- * Circuit breaker-mounting provisions.
- * Connection area for main AC terminals and all control wiring
- * 24 volt DC engine electrical system.
- * 24 volt starter motor.
- * Battery charging alternator.
- * Battery rack and cables.
- * Flexible fuel lines.
- * Most metallic parts incorporate our powder paint primer base coat with UV inhibitive enamel top coat.
- * Single stage dry type air cleaner.
- * Corrosion resistant hardware.
- * Oil drain extension plumbed to base rail for convenient connection.
- * Microprocessor based auto start meter/ control panel.
- * Digital read out control system rated to operate from -30° C to 75° C with the following standard displays, shown continuously:
 - ** Generator AC voltage.
 - ** AC amperage:
 - Phase 1-2
 - Phase 2-3
 - Phase 3-1
 - ** Frequency
 - ** Oil Pressure
 - ** Engine Temperature
 - ** Battery Voltage
 - ** Fuel Level (Diesel Only)
- * The following can be displayed using the scroll lock function:
 - ** Run time
 - ** Safety set point for over speed
 - ** Over crank
 - ** High water temperature
 - ** Low oil pressure
- * Voltage adjust rheostat
- * Auto/ off /run switch

Generator Specifications

Manufacturer: MagneTek

Insulation: The main stator, main rotor, exciter stator and exciter rotor are all insulated with Class H materials and rated Class F per NEMA MG1 -1.65 and 852757 definition. All materials are non-hygroscopic to prevent fungus growth. A polyester and epoxy combination offers maximum environmental protection.

Main Stator: 2/3 pitch and one slot skewing minimize voltage harmonics and meets telephone influence factor (TIF) per NEMA MG1-22.43. Twelve lead re-connectable design. Coated with anti-abrasive sealer.

Main Rotor: Four pole single piece lamination with full amortisseur windings and coil supports. Winding is precision wet layer wound with epoxy resin and dynamically balanced to two mil in two planes. Production over speed tested at 125% for 15 minutes. All materials are non-hygroscopic to prevent fungus growth.

Exciter: Brushless, three phase, six-pole rotor, and production over speed tested at 125% operating speed.

Rotating Diode: Sealed full wave with metal oxide surge suppressor

Bearing: Double-sealed, permanently lubricated, 50,000 hour B-10 life including magnetic pull.

Drive Coupling: Positive alignment, flexible drive discs.

Automatic Voltage Regulator Specifications

Operation: Volts per hertz, three phase sensing with overload and loss of sensing protection.

Construction: Solid state, modular: fully sealed and potted design provides component protection from corrosive environments and vibration.

Voltage Regulation: +/- 1% voltage regulation no load to full rated load: +/- 1/2% voltage regulation at steady state conditions.

Radio Interference (RFI): Integral filter provides suppression of conducted electromagnetic interference to levels meeting most commercial requirements.

Voltage Selections and Full Load Amperages at Standby Rating

Three Phase

60 Hz Amperage	50 Hz Amperage
120/208 1735	110/190 1519
120/240 1503	120/208 1388
277/480 752	230/400 722
347/600 601	240/415 696

*Single Phase

60 Hz Amperage	50 Hz Amperage
120/240 1300	110/220 1523

All voltages listed are available and/or re-connectable with the exception of the three phase, 60 Hz, 347/600 volt generator which is application specific. For other voltages, contact your EMPS distributor. All output amperage ratings listed above are at standby rating.

*Single Phase amperage based on standard generator and unity power factor. For full single phase output use generator model MTG56.

Application and Performance Data

MagneTek Alternator Model MTG49 is standard with this package. Larger generators may be required to meet certain application specific requirements such as Single Phase, Motor Starting and Non Linear Loads. The Maximum Generator rating available in this package is MTG61.

Technical Specifications

Model 500 RD 500 kW Diesel Generator Set

Engine Specifications

Manufacturer	Volvo	
Model	TAD 1631 GE	
Type	In line 4 Stroke	
Aspiration	Turbo/ Air to Air Inter cooled	
Cylinders	6	
Displacement	984 In ³ . (16.12L)	
Bore and Stroke,	5.67 in x 6.5 in. (144 mm x 165 mm)	
Compression Ratio	15.0:1	
Minimum Ah. at 5°C	2 X 110	
RPM	1800 rpm	1500 rpm
BHP Minimum REQ'D		
at Rated kW	749	643
BMEP	335 psi	345 psi

Generator Set Deration Factors

Temperature:
1.5% for every 10° F above 104° F
1.5% for every 5.5°C above 40°C

Altitude
6% for every 1650 feet above
3300 feet
6% for every 503 meters above
1006 meters

Cooling System

High Ambient 104°F (40°C) System
Coolant Capacity with Radiator
67.6 qt. (64.0L)

Maximum restriction on discharge side of radiator
.5 In wc (125 Pa)

1800 rpm **1500 rpm**

Coolant Flow
166 GPM 138 GPM
(628.4 LPM) (522.4 LPM)

Heat Rejection
to Coolant at
Full Load
13364 Btu/min 11089 Btu/min
(1410 MJ/min) (1170 MJ/min)

Heat Rejection
to Room at Rated
Full Load
1877 Btu/min 1649 Btu/min
(198 MJ/min) (174 MJ/min)

Air System

	1800 RPM	1500 RPM
Maximum		
Air Intake		
Restriction		20.1 In wc (5 kPa)
Radiator Cooling		
Air Flow	18434 cfm (522 m ³ /min)	15000 cfm (425 m ³ /min)
Combustion		
Air Flow	1476 cfm (41.8 m ³ /min)	1229 cfm (34.8 m ³ /min)
Generator		
Cooling		
Air Flow	5256 cfm (149 m ³ /min)	4380 cfm (124 m ³ /min)

Exhaust System

Exhaust Manifold
Outlet Size 4.09 in. dia. (10.4cm)
Maximum Allowable Back Pressure
28.1 In wc (5.0 kPa) 20.1(5.0 kPa)
Exhaust Gas Flow
at Standby
Rating 4117 cfm 3496 cfm
(116.5 m³/min) (98.9 m³/min)

Exhaust Temp at
Standby Rating
1035°F 1035°F
(557°C) (557°C)

Fuel System

Consumption at Standby Rating:

Load	1800 RPM		
	kW	US gal/h	Litre/h
1/4	125	9.8	37.1
1/2	250	17.7	67.0
3/4	375	26	98.4
Full	500	36.2	137.0

Load	1500 RPM		
	kW	US gal/h	Litre/h
1/4	100	7.5	28.5
1/2	200	13.8	52.3
3/4	300	20.5	77.5
Full	400	28.4	107.1

Governor Type Isochronous
Governor Regulation: +/- .25%

Generator

Manufacturer	MagneTek
Model	MTG49
Motor Starting KVA,	
240/480 Volt WYE at	
35% Voltage Dip, 100%	
Voltage Recovery	1215 SKVA
Maximum Motor	
Starting KVA, 35% Voltage Dip	
Oversized Generator	
MTG61	2609 SKVA

Reactances

	480 V	400 V
at 105°C rise	60Hz	50Hz
Synchronous Xd	3.23	3.08
Direct Axis		
Transient X'd	.242	.223
Direct Axis		
Subtransient X'd	.174	.156
Zero Sequence Xo	.0015	.0074

Lubrication System

Engine Oil Capacity with Filters
16.91 US gal. (64L)
Oil Filter Type FF + BP

Engine Exhaust Emissions Certification Values

Exhaust Emissions (g/bhp-hr.)		
	*CARB	500RD
HC:	1	.4
CO:	8.5	.4
NOx:	6.9	6.3
PM:	.4	.2

Smoke Opacity (%)		
Acceleration	20	N/A
Lugging	15	4
Peak	50	N/A

* California Air Resources Board Standards.

Model 500 RD 500 kW Diesel Generator Set

Options:

Generator

- * Upsized
- * Tropical winding protection
- * Space heater
- * Series boost
- * UL listed mainline circuit breaker

Control

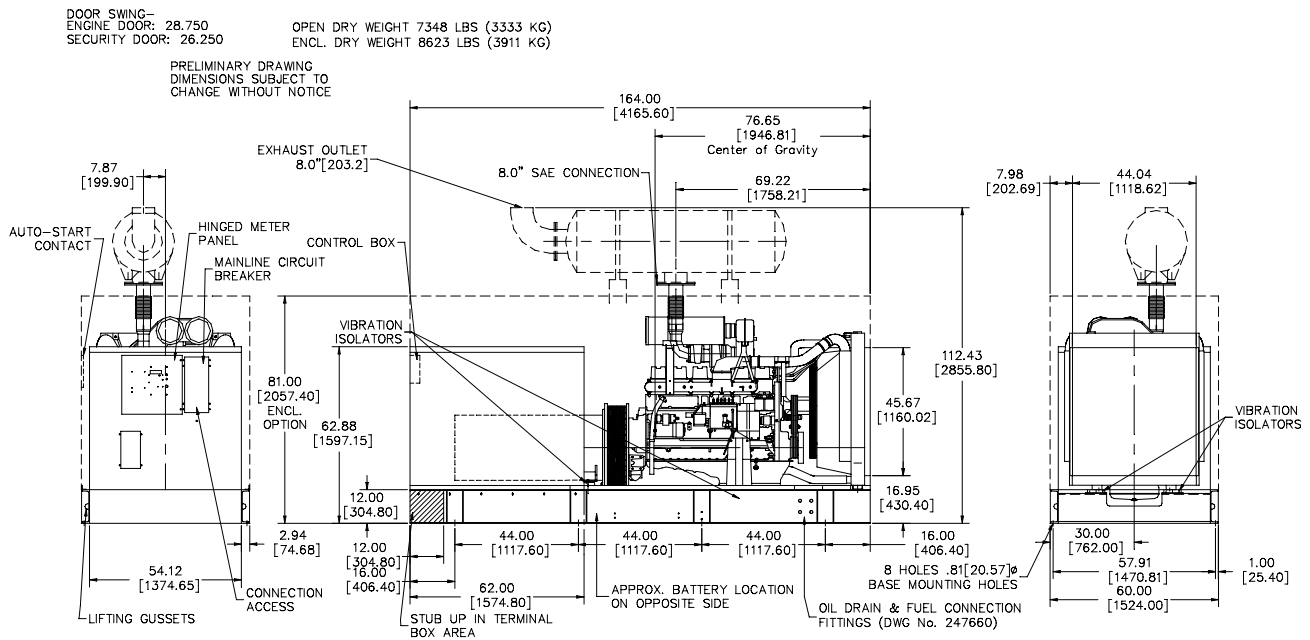
- * Remote alarm annunciator
- * Emergency stop
- * Multi-point dry contact board.
- * NFPA 110 Compliance
- * Low Temperature Display Heater

Engine

- * Battery/Battery heater
- * Battery charger
- * Engine pre-heater
- * Fuel/ water separator
- * Isochronous governor

Generator Set

- * EMPS automatic transfer switch
- * Industrial silencer
- * Residential silencer
- * Critical silencer
- * Weather protective enclosure
- * Sound attenuation
- * Sub-base fuel tank



58 Elliott Power Drive
P.O. Box 403
Lexington, TN 38351
Tel: 901-967-9393
Fax: 901-968-0161

Distributed by:



All specifications subject to change without notice. Printed in the USA

Updated 2/00